

Download Free Microsoft 70-640 PDF and VCE Updated Today 521-530

Vendor: Microsoft Exam Code: 70-640 Exam Name: TS: Windows Server 2008 Active Directory, Configuring Version: 14.91 QUESTION 521 Your network contains an Active Directory domain. The domain contains four domain controllers. You create a new application directory partition. You need to ensure that the new application directory partition replicates to only three of the domain controllers. Which tool should you use? A. Active Directory Administrative Center B. Dsamain C. Dsmod D. Ntdsutil Answer: D

QUESTION 522 Your network contains an Active Directory domain named contoso.com. All domain controllers run a Server Core installation of Windows Server 2008 R2. You need to identify which domain controller holds the PDC emulator role. Which tool should you run? A. Get-AdOptionalFeature B. netdom.exe C. Search-AdAccount D. dsrm.exe Answer: B Explanation: The FSMO role holders can be easily found by use of the Netdom command. On any domain controller, click Start, click Run, type CMD in the Open box, and then click OK. In the Command Prompt window, type netdom query /domain:<domain> fsmo (where <domain> is the name of YOUR domain). Note: The five FSMO roles [in Windows 2003] are: Schema master - Forest-wide and one per forest. Domain naming master - Forest-wide and one per forest. RID master - Domain-specific and one for each domain. PDC - PDC Emulator is domain-specific and one for each domain. Infrastructure master - Domain-specific and one for each domain.

QUESTION 523 Your network contains an Active Directory forest. The forest contains two domains. The forest contains four domain controllers. The domain controllers are configured as shown in the following table.

Server name	Domain name	FSMO role
DC1	Contoso.com	Schema master Domain naming master
DC2	Contoso.com	PDC emulator
DC3	Contoso.com	RID master Infrastructure master
DC4	Child.contoso.com	PDC emulator
DC5	Child.contoso.com	Infrastructure master RID master

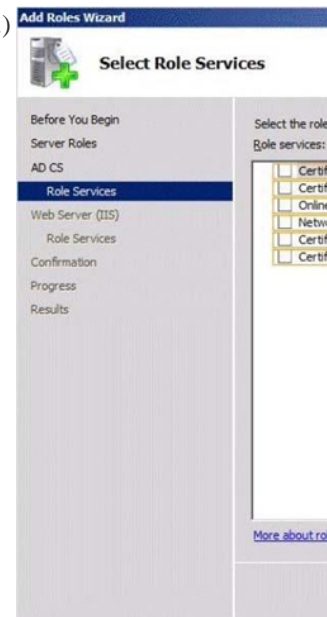
All user accounts are located in the child.contoso.com domain. Users in the child.contoso.com domain are members of several security groups in the contoso.com domain. Your company decides to change the naming standard of user accounts. You rename all of the user accounts to comply with the new standard. You discover that the old user names are listed in the members' list of the security groups in the contoso.com domain. You need to ensure that the members' list of the security groups in the contoso.com domain displays the new user names. What should you do? A. Transfer the PDC emulator role from DC2 to DC3. B. Configure DC5 as a global catalog server. C. Configure DC1 as a global catalog server. D. Transfer the infrastructure master role from DC3 to DC2. Answer: D

QUESTION 524 You are decommissioning a child domain. The child domain contains five operations master roles. You need to transfer the forest operations master roles to a newly installed domain controller in a different child domain. Which two domain operations master roles should you transfer? (Each correct answer presents part of the solution. Choose two.) A. RID master B. PDC emulator C. Schema master D. Domain naming master E. Infrastructure master Answer: CD Explanation: Forestwide Operations Master Roles The schema master and domain naming master are forestwide roles, meaning that there is only one schema master and one domain naming master in the entire forest. Note: Operations Master Roles The five operations master roles are assigned automatically when the first domain controller in a given domain is created. Two forest-level roles are assigned to the first domain controller created in a forest and three domain-level roles are assigned to the first domain controller created in a domain. The five FSMO roles [in Windows 2003] are: Schema master - Forest-wide and one per forest. Domain naming master - Forest-wide and one per forest. RID master - Domain-specific and one for each domain. PDC - PDC Emulator is domain-specific and one for each domain. Infrastructure master - Domain-specific and one for each domain.

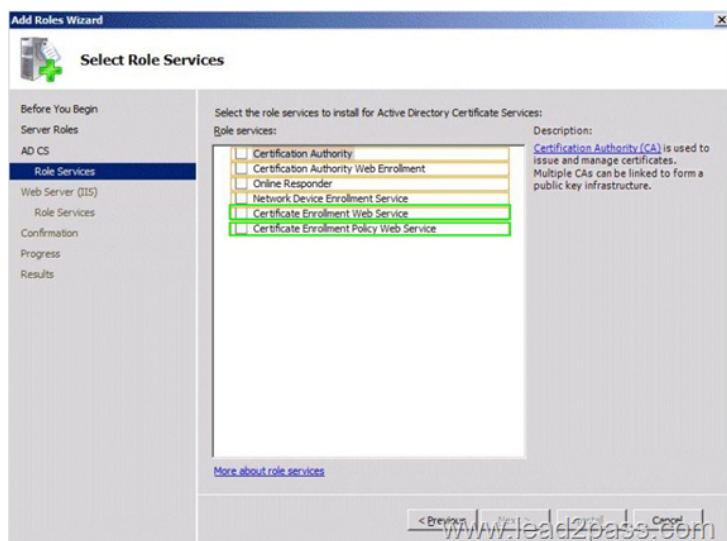
QUESTION 525 Your network contains an Active Directory domain. The domain contains a certification authority (CA). The network contains several Layer 3 switches. You need to ensure that the switches can request certificates from the CA. Which role service should you deploy? A. Network Device Enrollment Service B. Windows Token-based Agent C. Network Policy Server D. Client Certificate Mapping Authentication Answer: A

QUESTION 526 Your network contains an Active Directory forest named contoso.com. The forest contains an enterprise certification authority (CA). The enterprise CA is inaccessible from the internet. You have a server named Server1 that runs Windows Server 2008 R2. Server1 is accessible from the Internet. Server1 can communicate with the enterprise CA. You need to

ensure that laptops that are joined to the domain can renew their certificates automatically from the Internet. Which two role services should you install on Server1? (To answer, select the two appropriate role services in the answer area.)



Answer:



QUESTION 527 Your network contains an Active Directory domain named contoso.com. The domain contains two member servers named Server1 and Server2. You configure Server1 as a standalone root certification authority (CA). You identify the following requirements for the public key infrastructure (PKI): - The root CA must be offline once the PKI is deployed. - Users must be able to enroll for certificates automatically. You need to configure Server2 to meet the PKI requirements. What should you configure on Server2? A. A standalone subordinate CA B. A standalone root CA C. An enterprise subordinate CA D. An enterprise root CA Answer: C

QUESTION 528 Your network contains an Active Directory domain named contoso.com. The aging and scavenging settings of the contoso.com zone are configured as shown in the exhibit. (Click the Exhibit button.)



To answer, complete each statement according to the information presented in the exhibit.

A dynamic record that has not changed for at least ... days will be deleted when the scavenging process runs.

10
20
30

A static record that has not changed for 20 days will ... when the scavenging process runs.

be deleted
remain un

Answer: A dynamic record that has not changed for at least ... days will be deleted when the scavenging process runs.

10
20
30

A static record that has not changed for 20 days will ... when the scavenging process runs.

be deleted
remain unchanged

QUESTION 529 Your network contains an Active Directory domain named contoso.com. The domain contains three domain controllers named DC1, DC2 and DC3. You need to create a zone named adatum.com that replicates between DC1 and DC2 only. The zone data for adatum.com must be writable on both DC1 and DC2. Which three actions should you perform in sequence? (To answer, move the appropriate three actions from the list of actions to the answer area and arrange them in the correct order.)

- On DC2, run the `dnscmd /EnlistDirectoryPartition` command.
- On DC1, run the `dnscmd /CreateDirectoryPartition` command.
- On DC2, open **DNS Management** console and create a secondary zone.
- On DC1, open **DNS Management** console and create a standard primary zone.
- On DC2, open **DNS Management** console and create an Active Directory-integrated zone.

Answer:

Actions	Answer Area
On DC2, run the dnscmd command and specify the / <i>EnlistDirectoryPartition</i> parameter.	On DC2, open DNS Manager and create a new Active Directory-integrated zone.
On DC1, run the dnscmd command and specify the / <i>CreateDirectoryPartition</i> parameter.	On DC1, run the dnscmd command and specify the / <i>CreateDirectoryPartition</i> parameter.
On DC2, open DNS Manager and create a new secondary zone.	
On DC1, open DNS Manager and create a new standard primary zone.	On DC2, run the dnscmd command and specify the / <i>EnlistDirectoryPartition</i> parameter.
On DC2, open DNS Manager and create a new Active Directory-integrated zone.	

www.lead2pass.com

QUESTION 530 Your network contains an Active Directory domain named contoso.com. All domain controllers run Windows Server 2008 R2. The domain contains a domain controller named DC1. DC1 hosts an Active Directory-integrated zone for contoso.com. You enable record scavenging for contoso.com by using the default settings. You configure scavenging to run every seven days. After 30 days, you discover that some DNS records of computers that were removed from the network are still present in the contoso.com zone. You need to ensure that the scavenging process can remove the stale records. What command should you run? (To answer, select the appropriate options in the answer area.)

Contoso.com

- Dnscmd
- Ipconfig
- Nslookup
- d2
- /ageallrecords
- /flushdns
- /recyclebin

www.lead2pass.com

Answer:

Contoso.com

- Dnscmd
- Ipconfig
- Nslookup
- d2
- /ageallrecords
- /flushdns
- /recyclebin

www.lead2pass.com

If you want to pass Microsoft 70-640 exam successfully, don't miss to read latest lead2pass Microsoft 70-640 dumps. If you can master all lead2pass questions you will be able to pass 100% guaranteed. <http://www.lead2pass.com/70-640.html>